

## ClearCore Arduino Wrapper - Manual Installation Process

Follow these steps to manually install all libraries needed to begin programming your ClearCore with the Arduino IDE.

*Note: An installer file is included on Teknic's website which automatically completes most of this process for you. Use these instructions only if that installer fails to complete.*

1) Download ClearCore\_Port\_Driver\_Install.zip. Open this file and run the executable inside to install USB drivers for ClearCore.

[https://www.teknic.com/files/downloads/ClearCore\\_Port\\_Driver\\_Install.zip](https://www.teknic.com/files/downloads/ClearCore_Port_Driver_Install.zip)

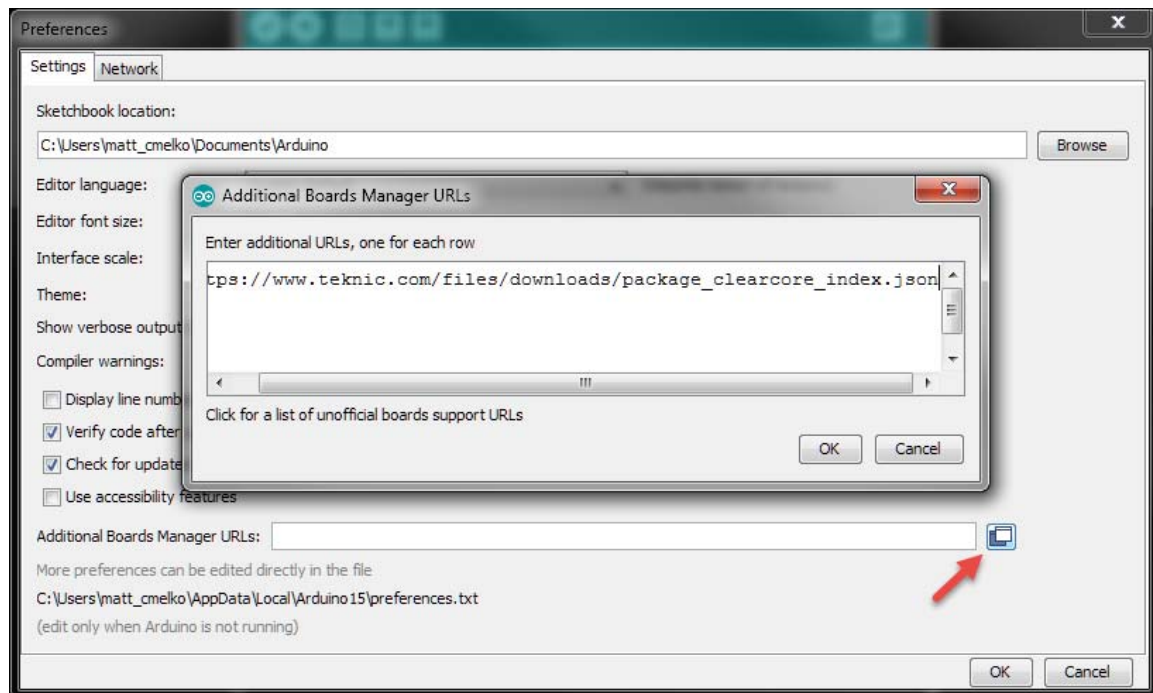
2) Download and install (or upgrade to) the latest version of the Arduino IDE here: <https://www.arduino.cc/en/Main/Software>.

3) Open the Arduino IDE. Go to File > Preferences. In the Preferences window, click the button to the right of the "Additional Boards Manager URLs" text field. In the window that pops up, copy/paste the following URL:

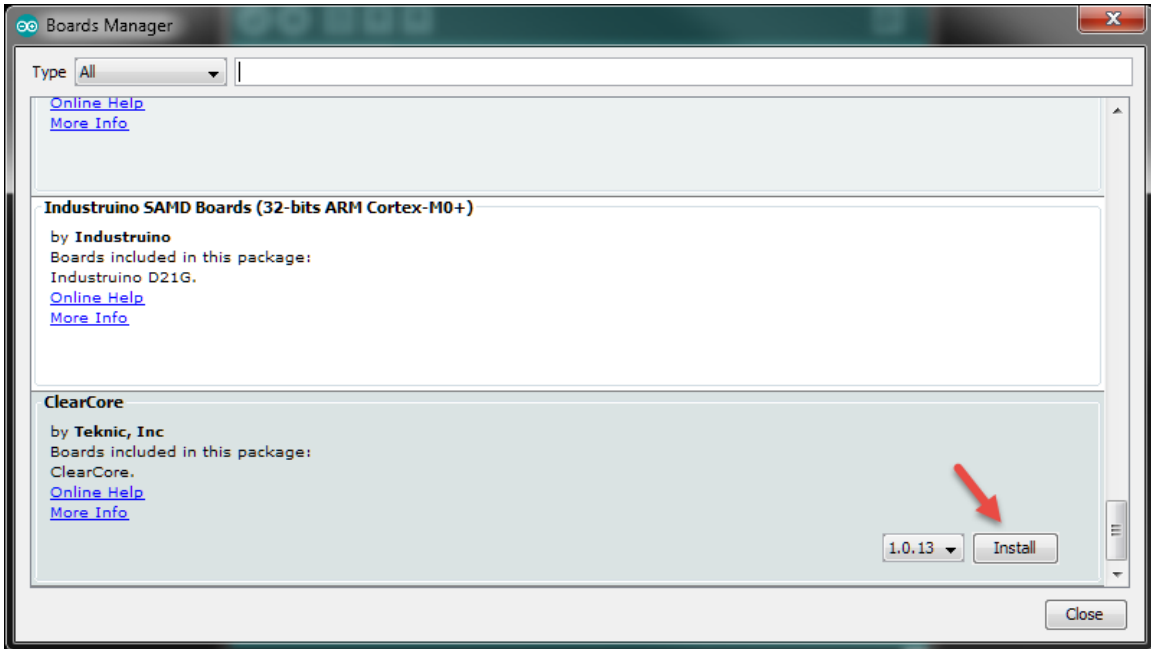
[https://www.teknic.com/files/downloads/package\\_clearcore\\_index.json](https://www.teknic.com/files/downloads/package_clearcore_index.json)

Note: if you have multiple Board URLs in this text field that you would like to keep along with ClearCore, separate them with a comma.

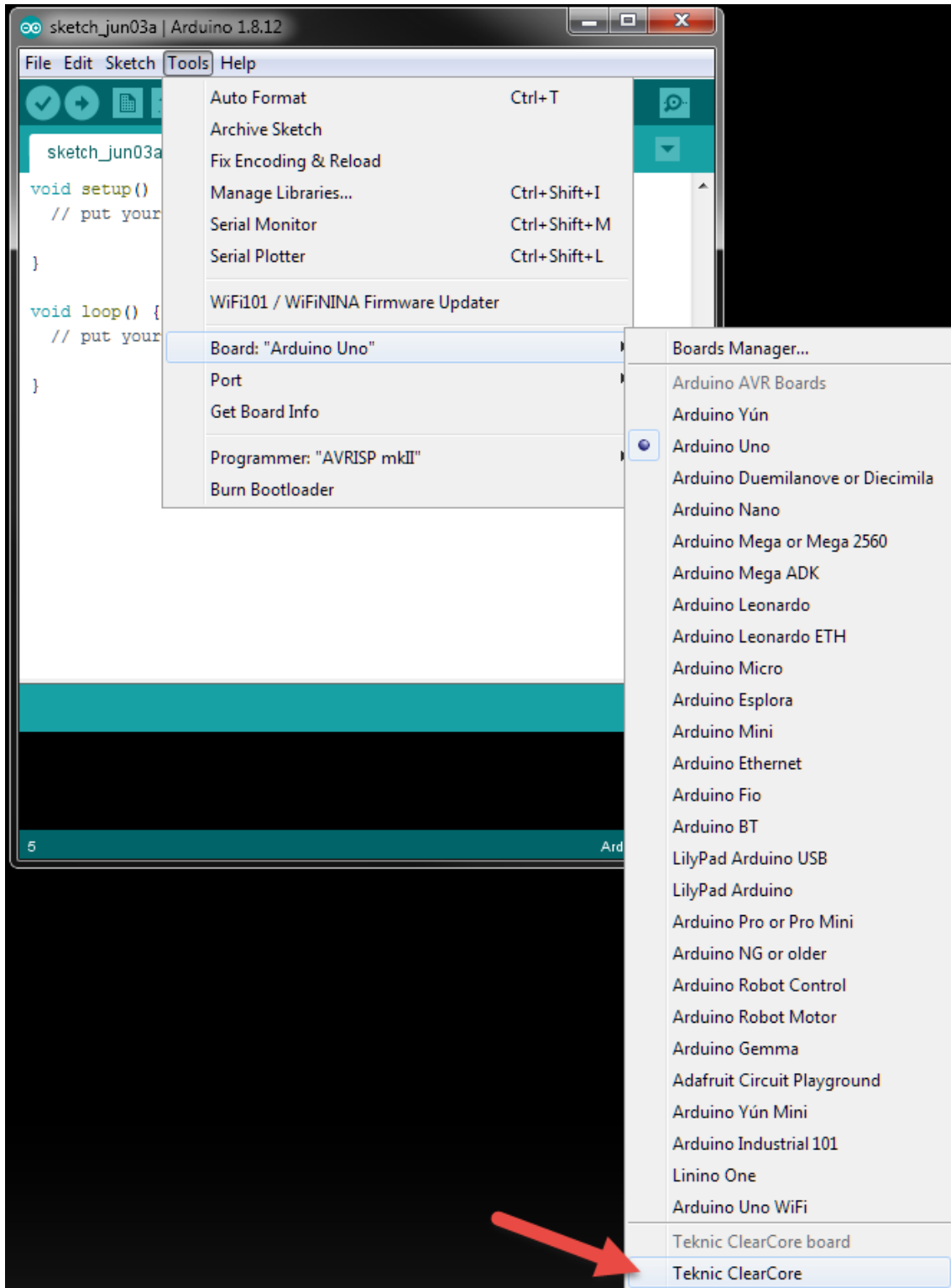
Click "OK" on that window, and on the Preferences window.



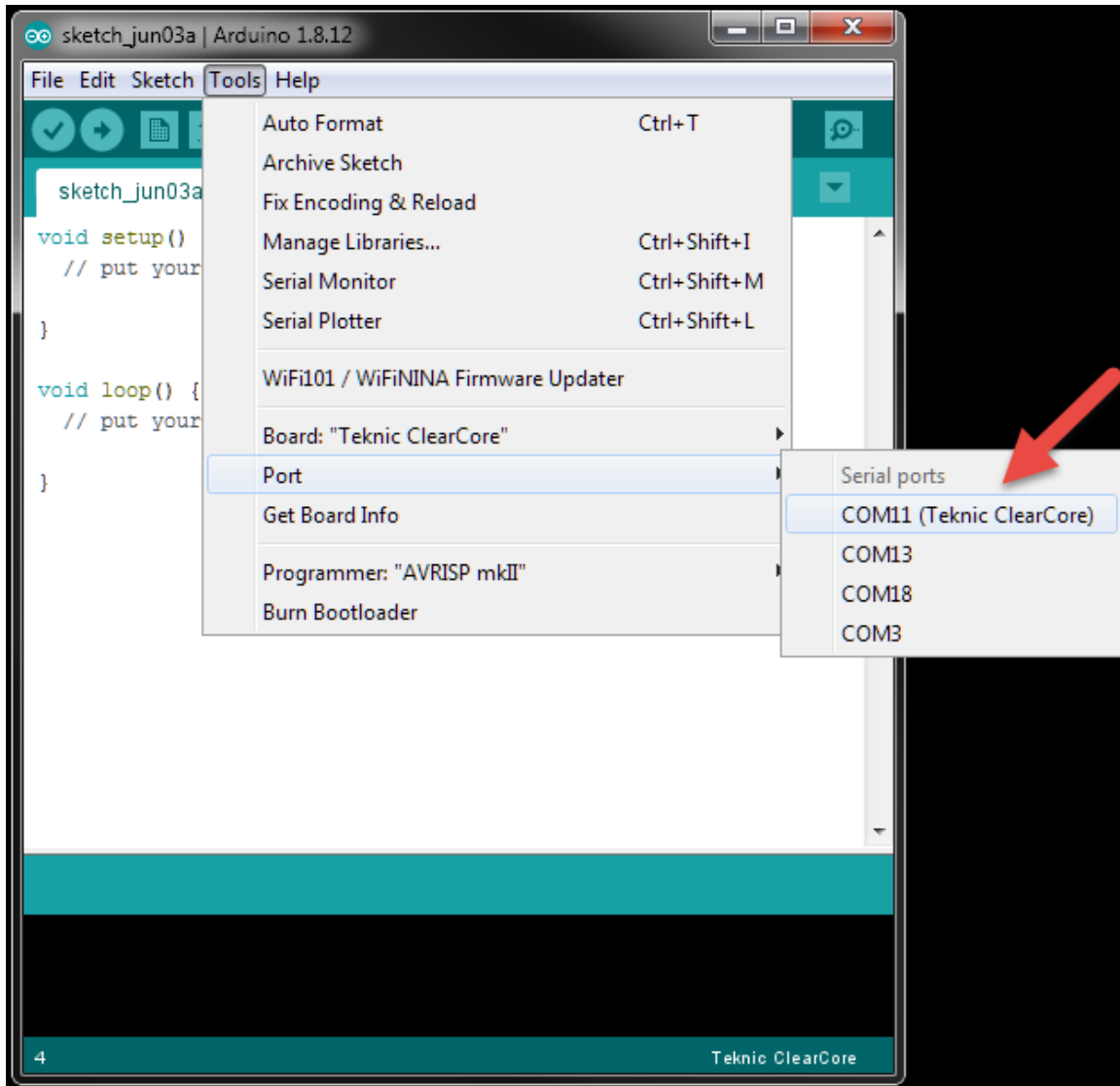
4) Next, select Tools > Boards > Boards Manager... Scroll through the list of boards or search for "ClearCore" in the text field at the top to quickly locate the ClearCore board listing. Click the "Install" button to install the latest version of the ClearCore Arduino Wrapper. Once installation completes, the Arduino IDE will have all files necessary for writing, compiling, and uploading code to a ClearCore device.



5) Under Tools > Boards, you should now see "Teknic ClearCore" below the listings for Arduino AVR boards. Select the "Teknic ClearCore" board entry.



6) Supply power to your ClearCore (see [ClearCore User Manual](#) for detailed power information) and connect the ClearCore to your PC using a USB cable. Once connected, select Tools > Ports. Select the port named "Teknic ClearCore", e.g. "COM 11 (Teknic ClearCore)". Your COM port number may be different.



7) You can now upload a sketch to the ClearCore. To quickly verify that you can upload a sketch, select and upload one of the ClearCore example sketches included in the ClearCore Arduino Wrapper package, under File > Examples > Examples for Teknic ClearCore.

Try the "WriteDigitalOutput" example. This will configure the I/O-0 through I/O-5 connectors to be digital outputs and toggle them on and off repeatedly. You will see their associated LEDs blink even if nothing is wired to the connectors.

