

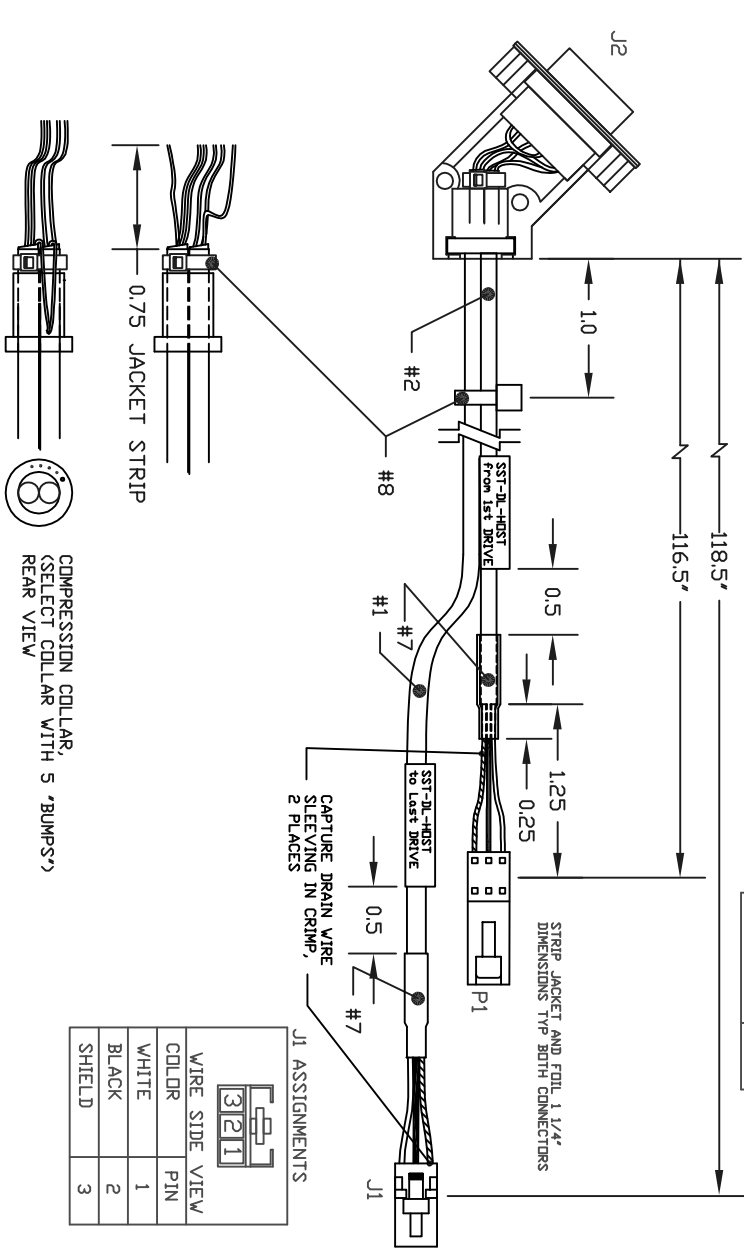
REV	DESCRIPTION/ECD NO.	DATE
B	J2 PN was Incorrect	1/27/03
C	ADD LABEL to RETURN CABLE	4/9/03
D	SWAP LABELS ON CABLES	5/13/03
E	UPDATE TERMINALS	2/24/04

J2 ASSIGNMENTS

PIN	CABLE REF	COLOR
1		JUMPER
2	#2	WHITE
3	#1	WHITE
4		JUMPER
5	#1, #2	BLACK (2)
6		JUMPER
7		JUMPER
8		JUMPER
9		JUMPER

P1 ASSIGNMENTS

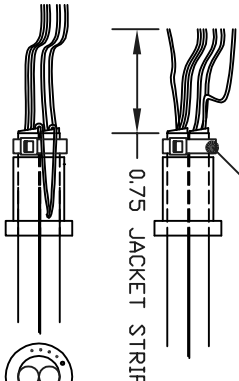
WIRE SIDE VIEW	COLOR	PIN
1	WHITE	1
2	BLACK	2
3	SHIELD	3



J1 ASSIGNMENTS

WIRE SIDE VIEW	COLOR	PIN
1	WHITE	1
2	BLACK	2
3	SHIELD	3

CAPTURE ENDS OF CABLE JACKETS WITH CABLE TIE
 FOLD DRAIN WIRES TOGETHER
 OVER COMPRESSION GROMMET AND
 CAPTURE BETWEEN SHELL HALVES



COMPRESSION COLLAR,
 (SELECT COLLAR WITH 5 'BUMPS')
 REAR VIEW

BILL OF MATERIALS

REF	QTY	DESCRIPTION	MFG/PART NUMBER
10	2	SLEEVING, PVC, FDR	ALPHA/
9	2	DRAIN WIRE (26 AWG), 1125' 1" x 3/4" WHITE	PVC-105-26-CLEAR BRADY/DAT-85-292-1 PANDUIT/PDL-249-1
8	2	CABLE TIE, BLACK, 4"	RICHCO/WIT-18R-B
7	2	HS, 3/8" X 3/4", BLACK	RAYCHEM/ VERSAFIT-3/8-0
6	.75'	WIRE, 26AWG, WHITE	BELDEN/83002-009
5	.75'	WIRE, 26AWG, WHITE	BELDEN/83002-009
4	.75'	WIRE, 26AWG, WHITE	BELDEN/83002-009
3	.75'	WIRE, 26AWG, WHITE	BELDEN/83002-009
2	118'	CABLE, 24-2, SHIELDED	BELDEN/9180
1	120'	CABLE, 24-2, SHIELDED	BELDEN/9180
P1-A	3	TERMINAL, PIN, 24-30 AWG	MOLEX/16-02-0105 (D)
P1	1	HOUSING, 3 COND, PINS	MOLEX/70107-0002
J2-B	1	CONNECTOR SHELL, DB9	3M/3357-6509
J2-A	8	TERMINAL, SOCKET	AMP/66504-4
J2	1	HOUSING, DB9F	AMP/205203-3
J1-A	3	TERMINAL, SOCKET, 24-30 AWG	MOLEX/16-02-0096 (E)
J1	1	HOUSING, 3 COND, SOCKETS	MOLEX/50-57-9403

TOLERANCES UNLESS OTHERWISE SPECIFIED:		DATE	SCALE	DRAWN BY	MATERIAL	FINISH
ANGULAR ± 1°	LINEAR ±0.1'	082301	NONE	DRL	see BDM	NA
6	5	4	3	2	1	

TEKTRONIX, Inc.

DESCRIPTION	FILENAME	DWGNO.	REV.
CABLE ASSY, SST-DL-HOST	SST-DL-HOST-rev.e.dwg	1101746	E